

Policy, Planning & Intermodal Development

FY2019 Budget Presentation

MICHELE BOOMHOWER, DIRECTOR
JANUARY 24, 2018

HOUSE TRANSPORTATION COMMITTEE

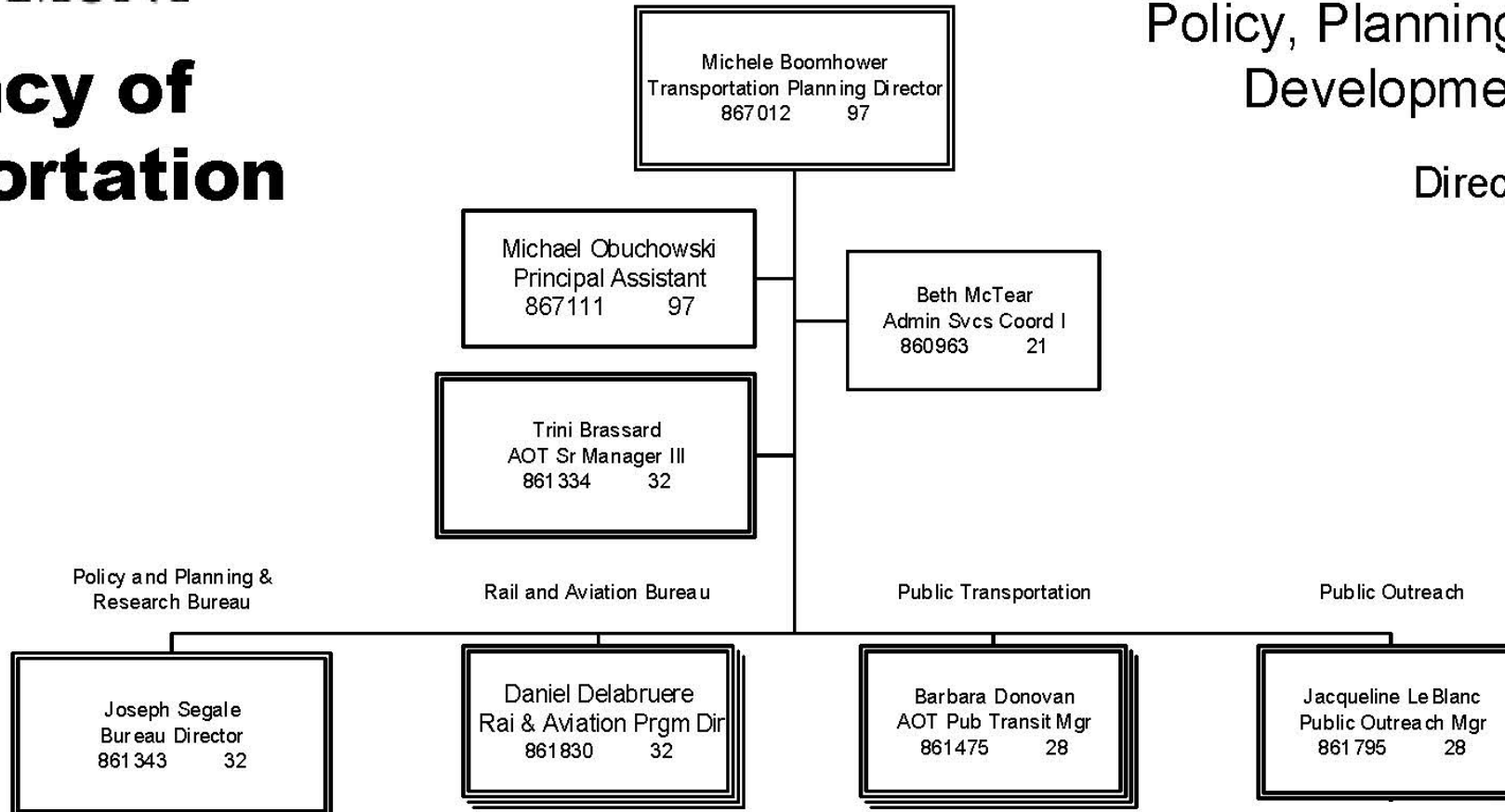




Agency of Transportation

Policy, Planning, & Intermodal Development Division

Director



Priority Focal Areas

1. Growing the Vermont Economy

- Coordinating with Agency of Commerce and Community Development and the Public Service Department to lease state-owned transportation Rights-of-Way at competitive rates.
- Making strategic investments in transportation facilities to recruit new businesses and help expand existing ones.

2. Making Vermont Affordable

- Maintaining adequate Levels of Service to lower transportation costs for residents and businesses.
- Balancing transportation revenue generation while providing a quality system.

3. Protecting our Vulnerable Population

- Providing Transit and Rail services, as well as walking and biking facilities.
- Assuring vulnerable populations have access to transportation services.

Policy, Planning & Research



- \$490,000 increase (4.6%)

- Major focus area:

- Systems & Modal Planning
- Federal Legislation & Rulemaking
- Environmental Planning
- Mapping
- Development Review & Permitting
- Research
- Public Outreach

Public Transit

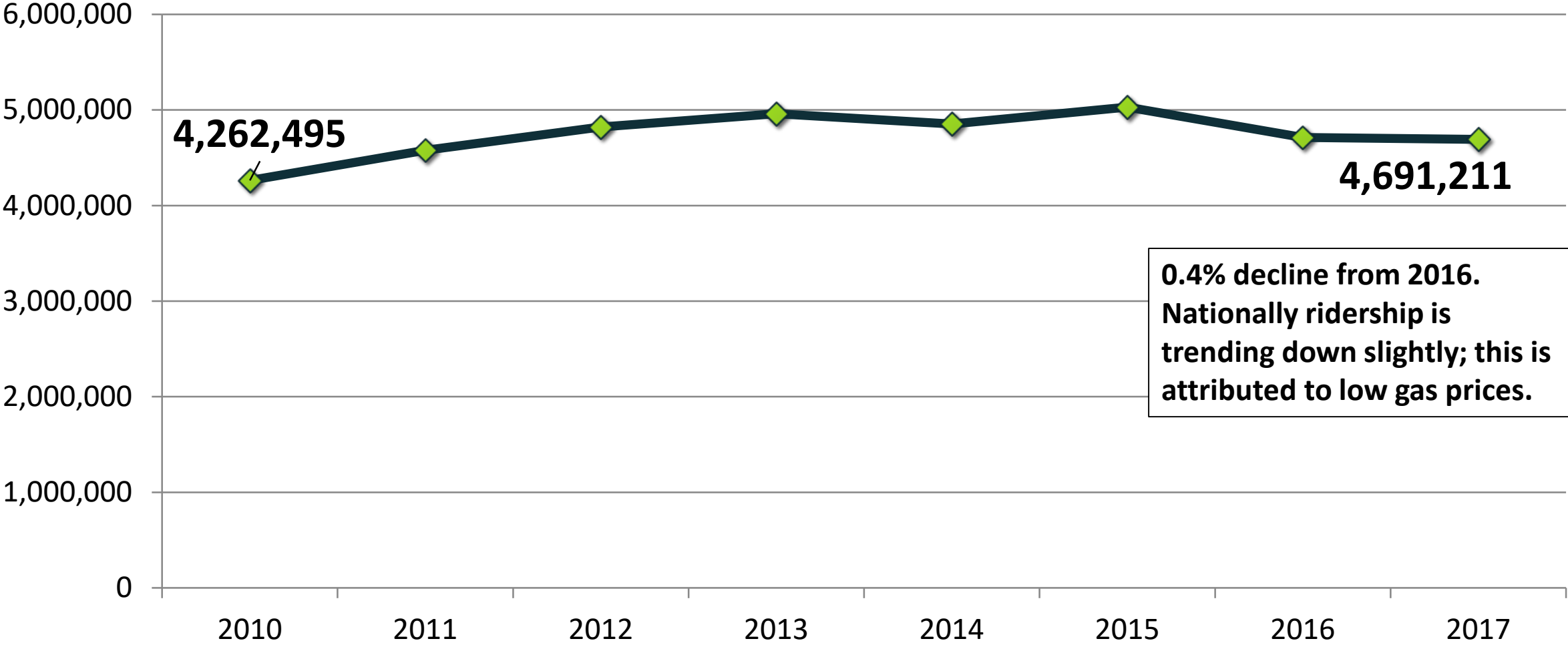


- \$3.1M decrease (-9.7%)

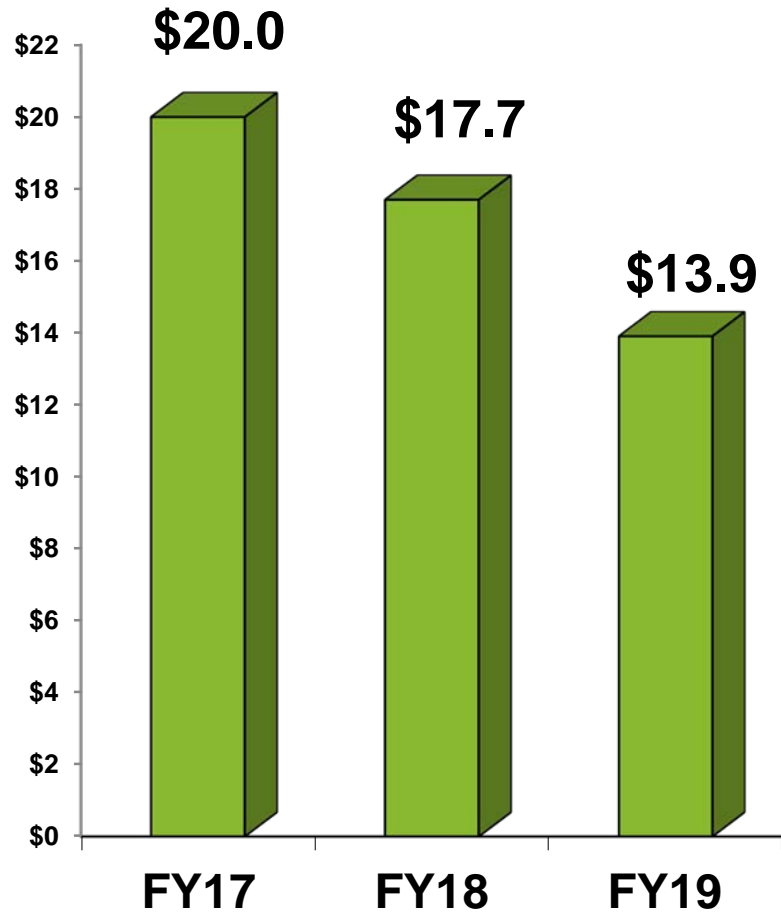
- Bus and bus facilities decreased due to competitive grant awards in prior years

- Annual ridership holding at just under 5 million – 10% increase from 2010

Public Transit Ridership by Federal Fiscal Year



Aviation



\$3.8M decrease (-21.3%)

Decrease is predominantly FAA project driven – AIP Program

- \$3.6M decrease in FAA
- State match is 10%

Major construction projects FY 19:

- Bennington
 - Runway safety and other improvements
- Rutland
 - Taxiway A improvements

\$750,000 support for BTV

Major Scoping Study for Morrisville-Stowe

Rail



\$7.5M decrease (-20.2%)

Decrease is largely due to completion of track upgrades under TIGER VII award

- \$5.86M in FY18 vs. \$1.8M in FY19 (excludes State match)

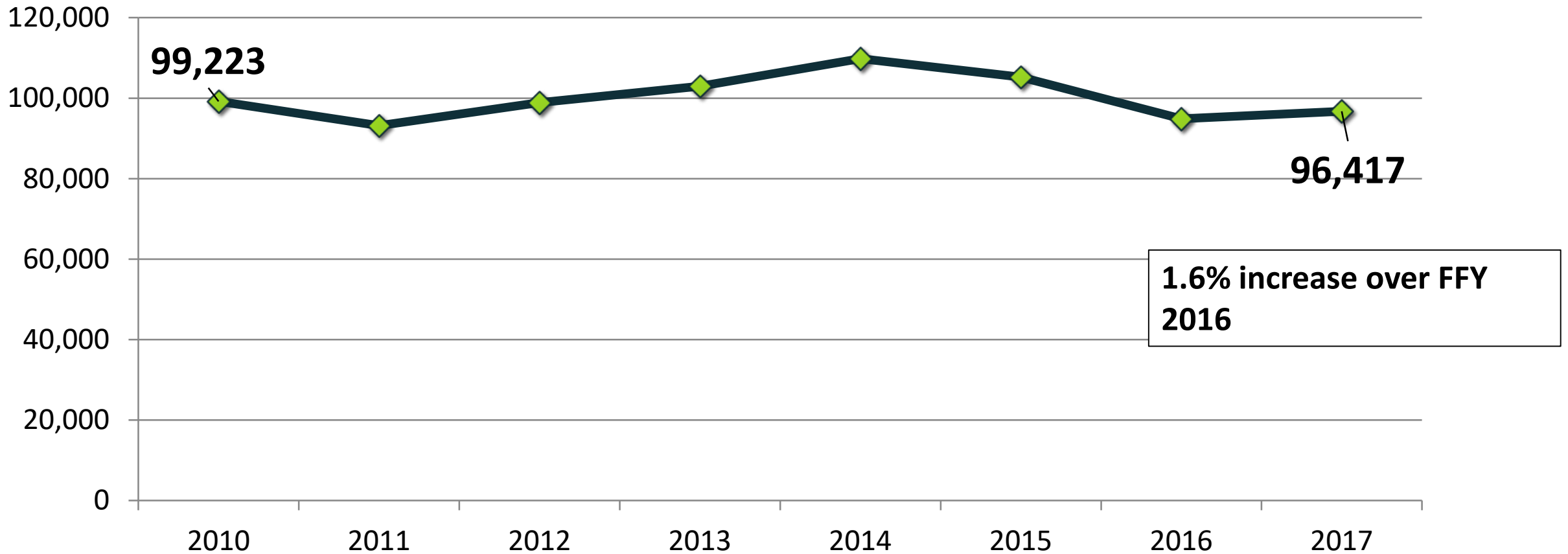
\$8.3M for continuation of Amtrak

Annual rail ridership increased 1.6% over FFY2016

Recently submitted application for INFRA and TIGER 9 discretionary grants

- VT Railway – 15 bridges (Rutland to Manchester)
- Conn River – 21 bridges (WRJ to Wells River)

Passenger Rail Ridership by Federal Fiscal Year



Policy, Planning & Intermodal Development Division Budget Presentation

Questions / Comments?